

# Easy to follow PCI DSS requirements in development workflows

Stefan CENUSA - PayU

**Who is PayU?**

- PayU is a comprehensive operator of online payments.
  - Multiple payment methods
  - 24/7 antifraud services
  - 24/7 Customer support and payment recovery
  - Invoice support
  - ERP integration support

# What is PCI DSS

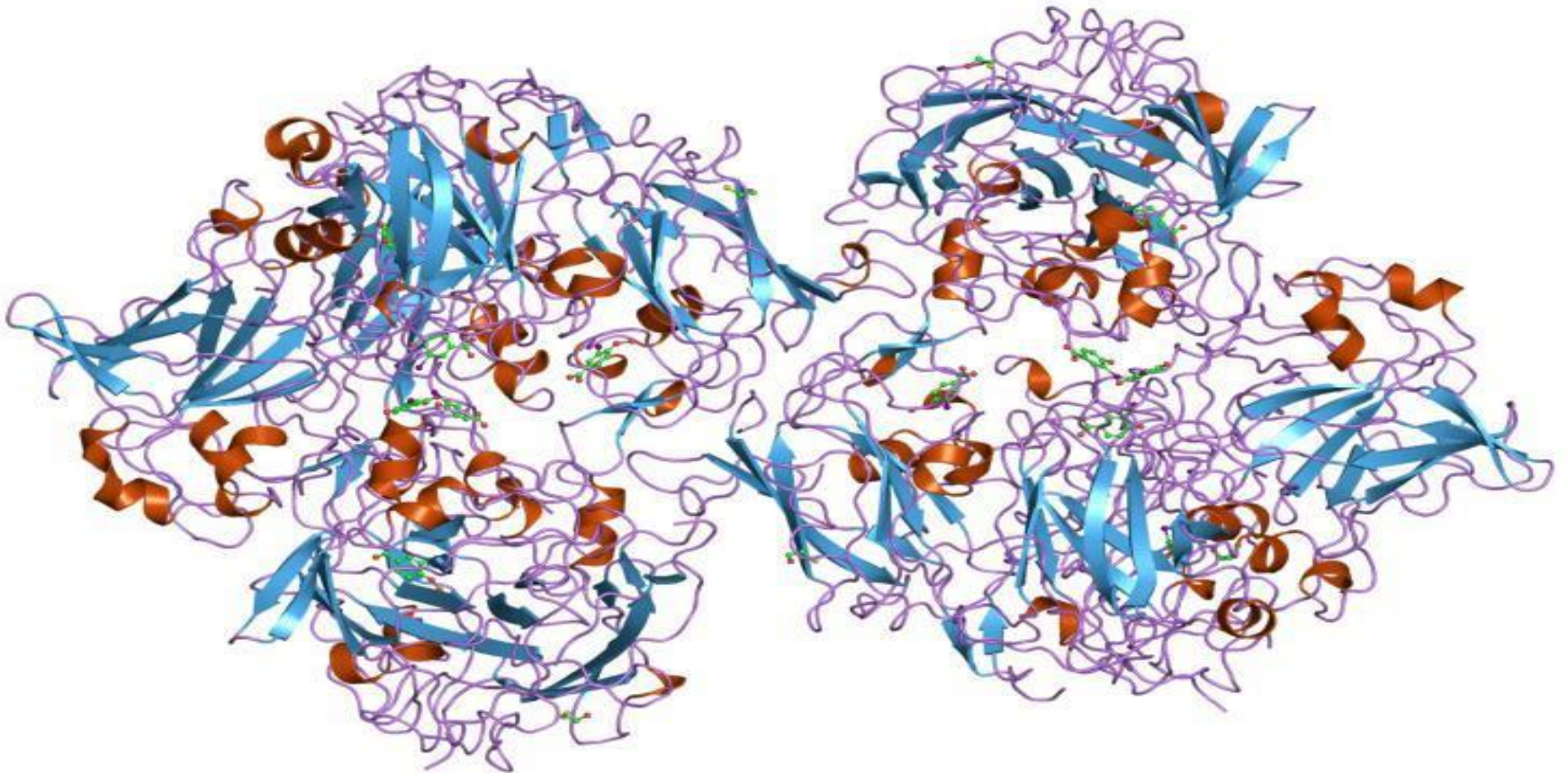


# PCI DSS Requirements

1. Install and maintain a firewall configuration to protect cardholder data
2. Do not use vendor-supplied defaults for system passwords and other security parameters
3. Protect stored cardholder data
4. Encrypt transmission of cardholder data across open, public networks
5. Use and regularly update anti-virus software on all systems commonly affected by malware
6. Develop and maintain secure systems and applications
7. Restrict access to cardholder data by business need-to-know
8. Assign a unique ID to each person with computer access
9. Restrict physical access to cardholder data
10. Track and monitor all access to network resources and cardholder data
11. Regularly test security systems and processes
12. Maintain a policy that addresses information security

# Workflows

# Where to start?





# Transparency

- Builds trust
- Ensures that ticket information is available at all times for everybody
- Facilitates knowledge sharing
- Helps with the hassle of having duplicates
- Increases innovation on improvements
- Keeps your stakeholders up to date

# Limit overhead

- Administrative
- Testing
- Backwards Compatibility
- Duplication
- Deployment

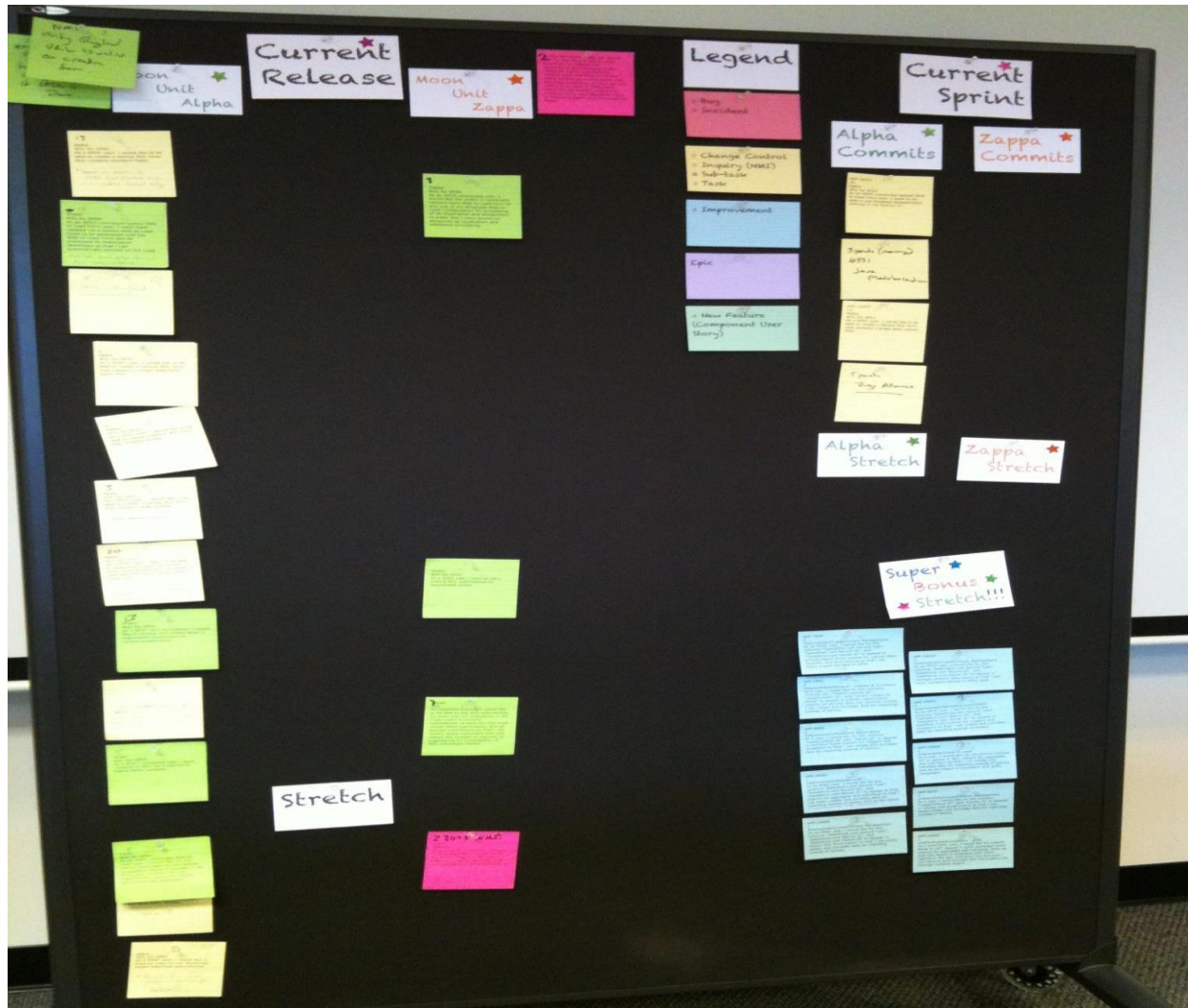
**What tools are we using?**

# JIRA

- Easy planning for any methodology
- The workflows are easy to create and manage
- The project visibility



# Create explanatory backlogs



# Fisheye

- Track code activity in one place
- File history
- IDE like diffs, annotations
- Quick project navigation
- Advanced search
- Repository charts



# Crucible

- Code review
- Code quality
- Development forum
- Great notification system



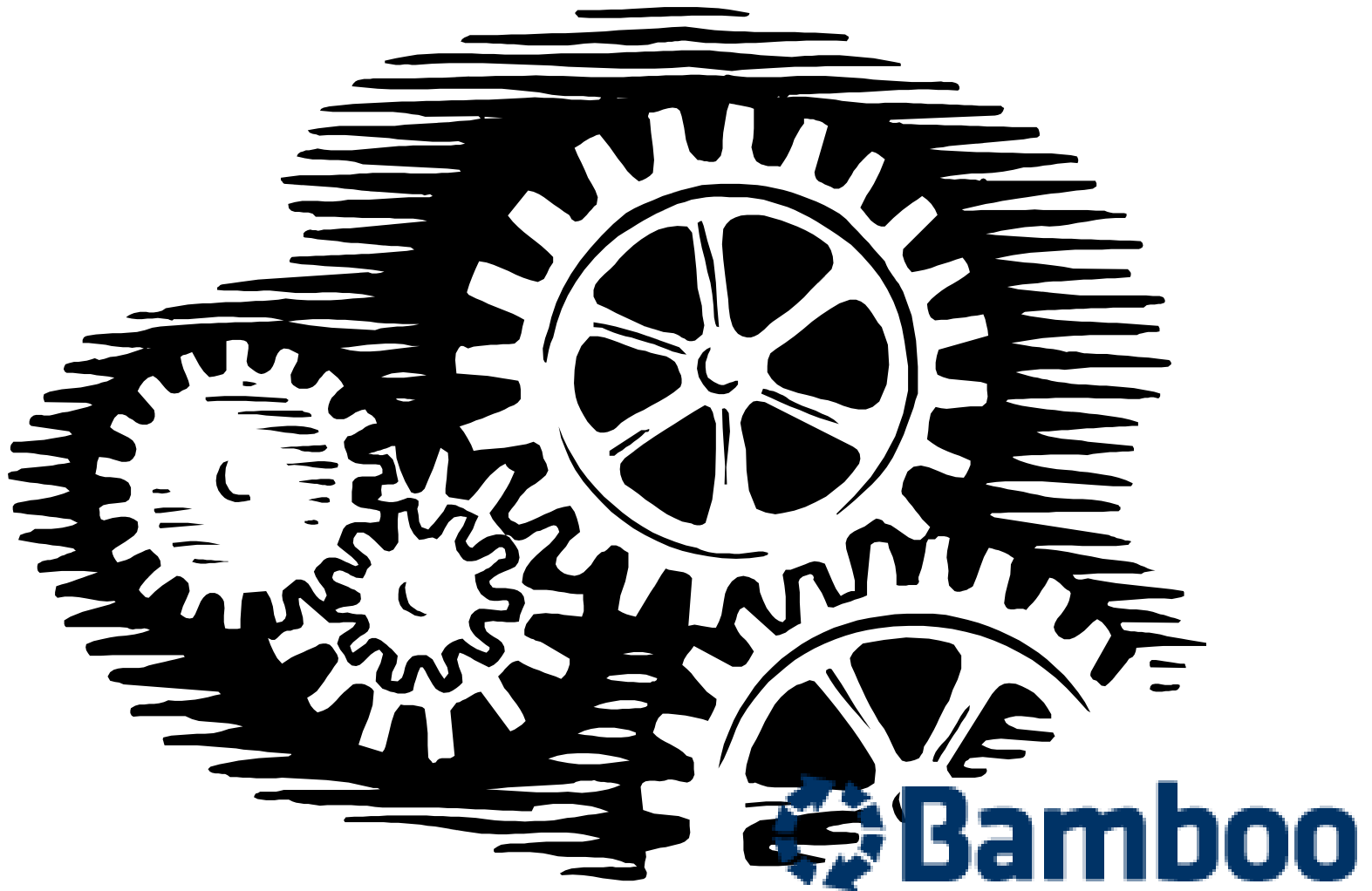
# Bamboo

- Continuous Integration and Release Management
- Instant feedback on deployment
- Tests automation
- Deploy in test, staging or Production environment from the same place



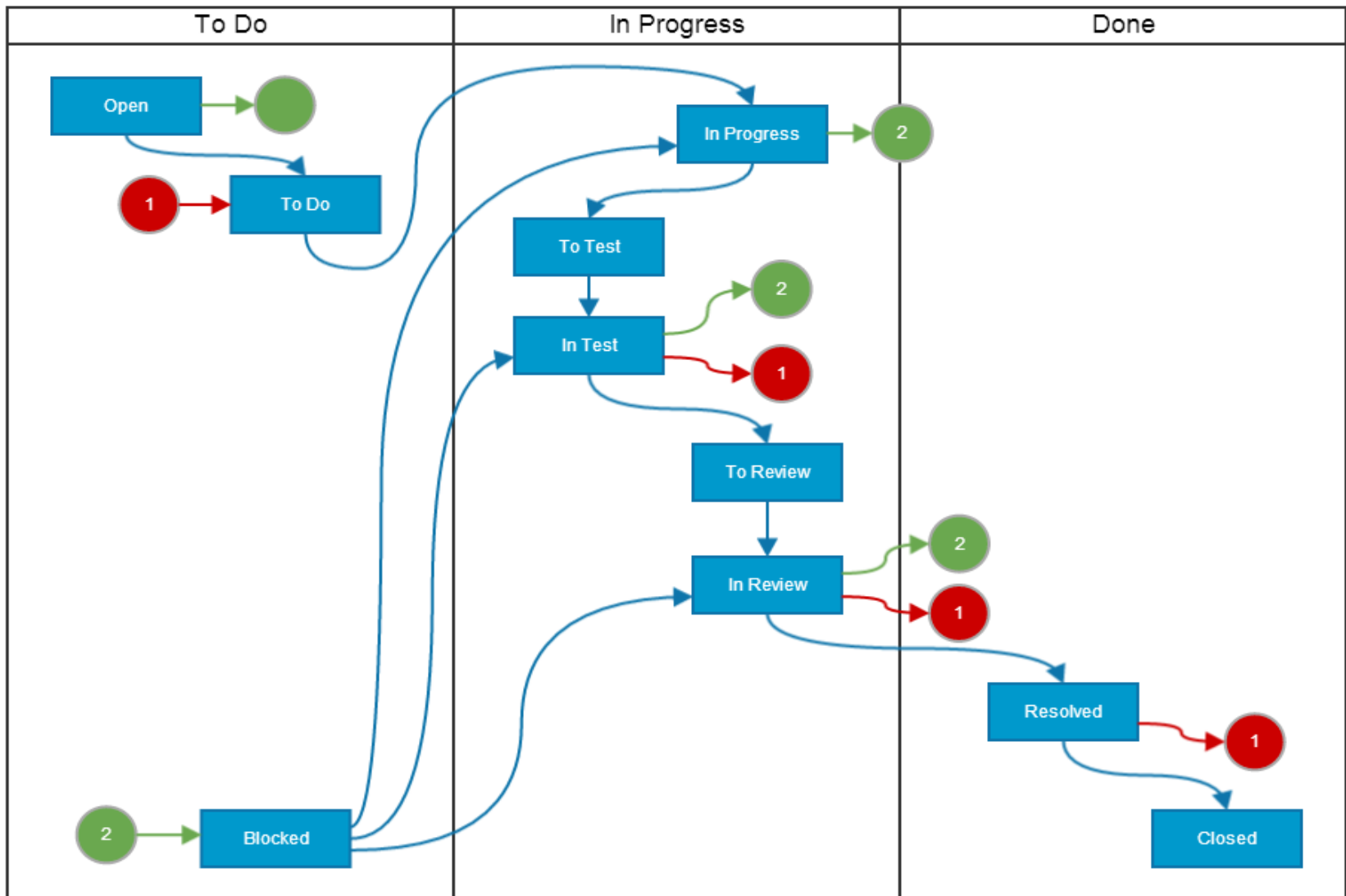


Have as many automated tests as possible!!

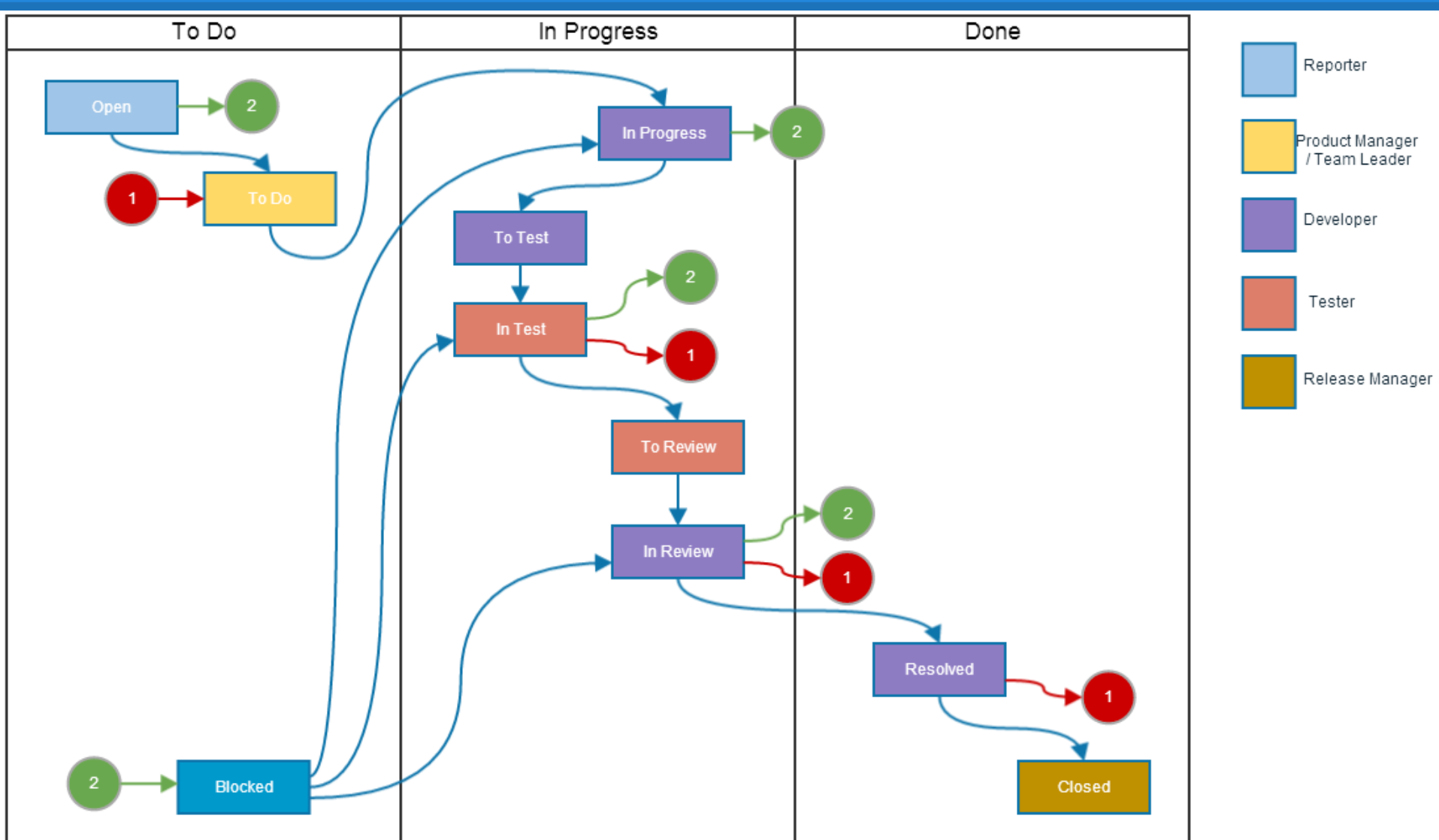


**Back to compliance**

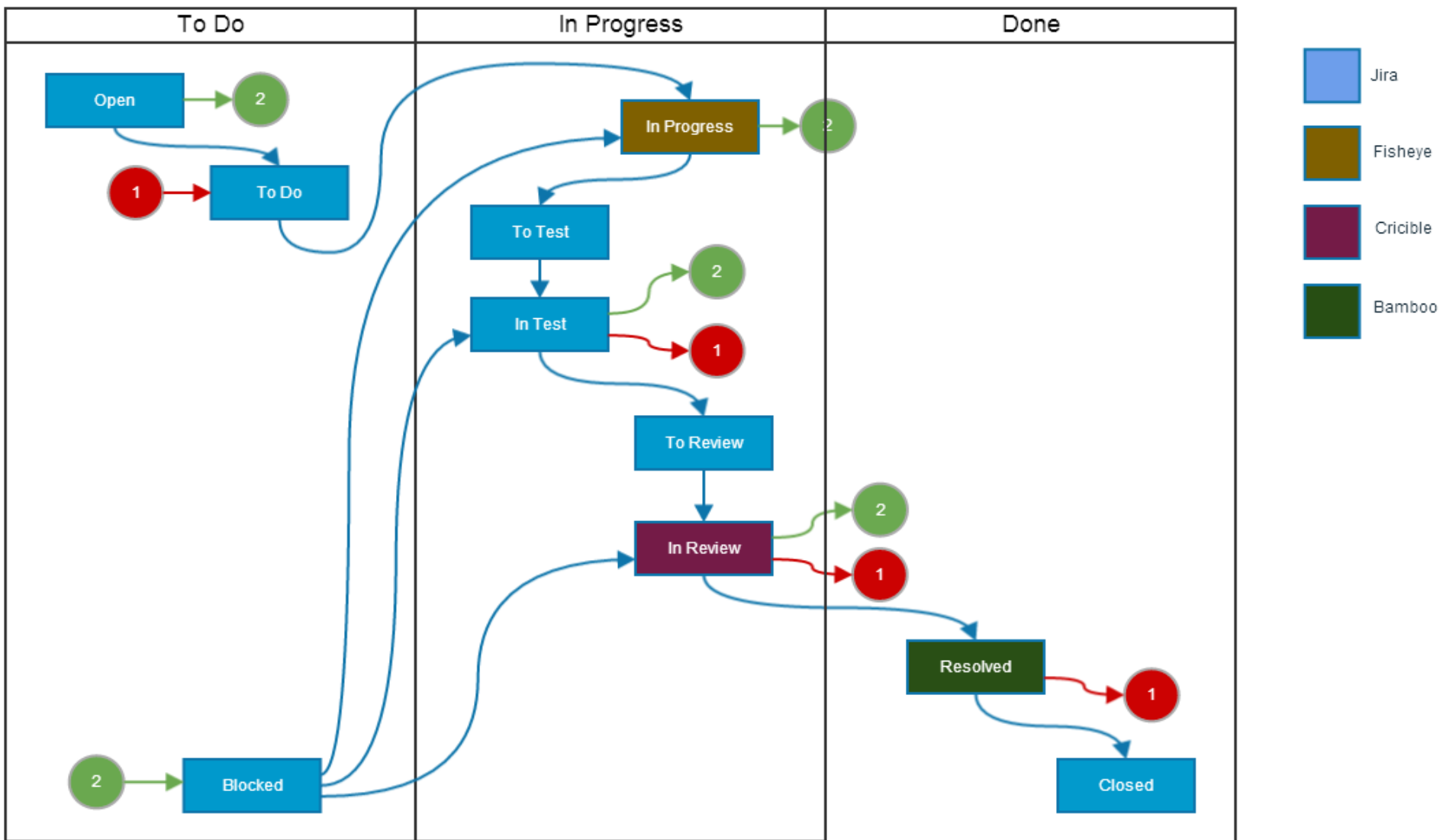
# Development Workflow



# Enforce separation of duties



# Automatically build audit trails



**Thank you!**

**Q&A**