

serce
polskiego
internetu

Peering, transit, colocation....
neutrality, globality, availability...
New IT math

>100
Gbps

Sylwester Biernacki
PLIX

not only me....

*serce
polskiego
internetu*



let me introduce...

*serce
polskiego
internetu*

Jan Daan Luycks

CEO of **>100**
CE COLO Gbps



Peering, transit, colocation....

Much has been said on this topic
but
reminding is the best way to strengthen knowledge
so
we will do it again :)



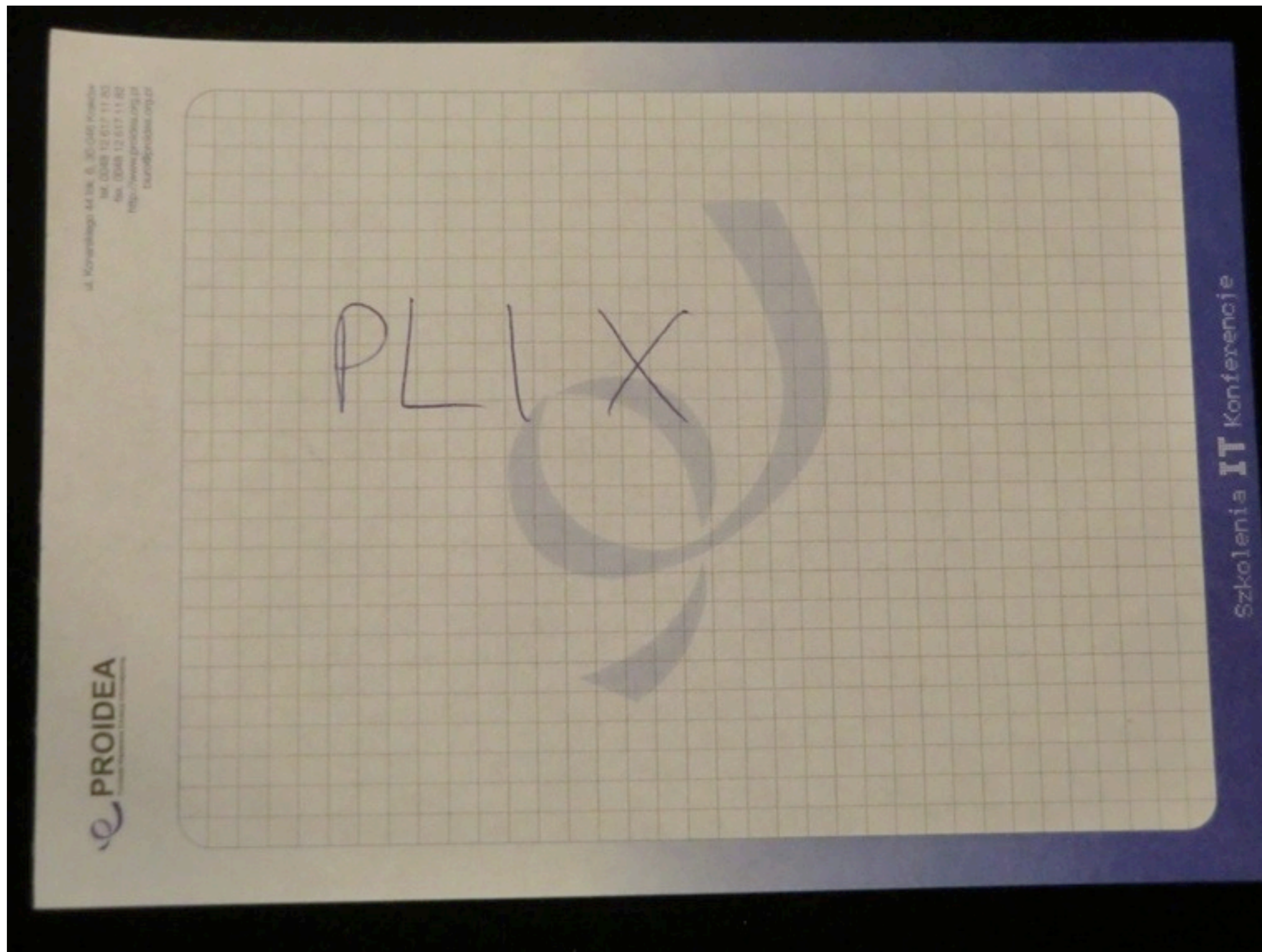
Where is the best place to peer in Poland?



LIM/Marriott building



LIM/Marriott = PLIX facilities

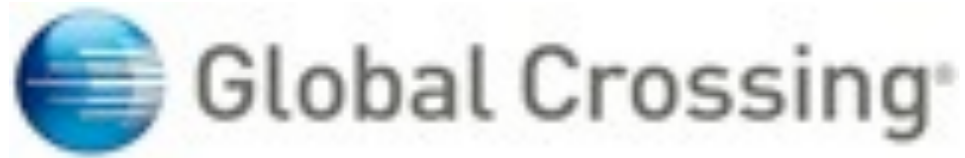


Where is the best place to buy IP Transit in Poland?



LIM/Marriott building





TeliaSonera



TATA COMMUNICATIONS



Where's the best place to collocate your equipment?



LIM/Marriott building



PLIX DC



Neutral Data Center (NDC)



neutrality, globality, availability...

Do we have carrier neutral facilities?



Globality - we have global players in Poland, no need to encourage them to come here



Availability

PLIX DC - 100% uptime since June 2009

New facility on 3rd floor - UPSes, power boards



New IT Math



But before...



Contest

what is the biggest car in PLIX?



Fiat Ducato :) 15m³ of cargo space



New IT Math



We announce, that after 5 years from birth, PLIX has started second PoP.

The new already working location of PLIX is CE COLO site at Piękna 24



PLIX

POLISH INTERNET EXCHANGE



CE-Colo

The whole math of polish internet is changing.
Since now all PLIX and PLIX DC services are
available in CE COLO as well as in LIM.

These are:



- 1GE and 10GE ports at PLIX
- private VLANs (Piękna-LIM)
- fiber pairs between Piękna and LIM
- colocation on the same price levels as it is in PLIX DC in LIM (annex for current services is enough to make this installation).



What's that?



CE-Colo



CE Colo is a leading provider of state-of-the-art carrier-neutral data center services in Central and Eastern Europe. CE Colo was established through the combination of selected GTS data center facilities with Sitel Data Center (SDC) in the Czech Republic, a company GTS acquired in January 2011. CE Colo owns and operates data center facilities in five countries throughout the region - Czech Republic, Hungary, Poland, Slovakia and Romania. Our data centers provide secure and connected environments where customers connect, house and distribute mission-critical data, web content and media.



In many countries, CE Colo facilities provide key interconnection points for the Internet with PLIX in Warsaw, NIX in Prague and BIX in Budapest.

CE Colo is focused on providing its customers the data center infrastructure needed to grow their businesses.





CE COLO Piękna

0) **NEUTRAL colocation facility**

- 1) around 600 square meters of space
- 2) 2 independent 15kV lines
- 3) 2 trafo stations 630kVA each
- 4) UPSes with battery backup for 6 hours
- 5) DC power plant
- 6) diesel power generator
- 7) mobile diesel power generator connection
- 8) raised floor
- 9) precision cooling
- 10) gas fire suppression
- 11) CCTV monitoring





PLIX rack in CE COLO





PLIX
POLISH INTERNET EXCHANGE

CE
CE-Colo





We have first PLIX members at PLIX CE COLO



We have significant market players at PLIX CE COLO



We have transmission providers in PLIX CE
COLO (+ fiber cable between LIM and Piękna 24)



We should not talk about prices during PLNOG, so we will just go through this slide fast.

- 1) port 1GE at PLIX in CE COLO - 1.000PLN/month
- 2) port 10GE at PLIX in CE COLO - 4.000PLN/month
- 3) 1U switching gear in common rack in CE COLO - 150PLN/month for PLIX members
- 4) 42U colocation in CE COLO
- 5) MPLS transmission 100Mbps/100PLN
- 6) fiber pair between LIM and Piękna - 1000PLN/month
- 7) cross-connects **with SLA** - 50PLN/month copper, 100PLN/month fiber

You can get this services just signing annex for existing agreement with PLIX or PLIX DC :)



Additional services:

- access NOC PLIX (the same team which is available for you 24/7 in PLIX DC LIM)
- remote-hands
- remote-eyes
- installation of cross-connects
- equipment installation



Contest: what's that?



Contest: what's that?



Why CE COLO not Telehouse.Poland?

- 1) We still do not believe in neutrality of ATM
- 2) We are arguing with lawyers of ATM for almost a year - our time is valuable as well as Yours
- 3) We have done all details on contract with CE COLO in 3 working days !!!
- 4) It's near TPSA and Netia, where most of ISPs and Telcos have their own fiber cables
- 5) It's closer to LIM than THP



But it doesn't mean we are leaving LIM.

We are upgrading current space, adding more, investing lots of money into infrastructure in LIM.



Tour to PLIX DC (one level above us)

Tour will be organized today - you can reach our staff at stand and ask them when is the nearest tour planned. Please remember to leave your visit card :)



Tour to CE COLO facility.

It will be made on thursday after PLNOG is finished. Please come to our stand and sign in on the list together with contact details (can be visit card).



Another contest

what's the smallest car in PLIX?



Smart Brabus W2 PLIX :)



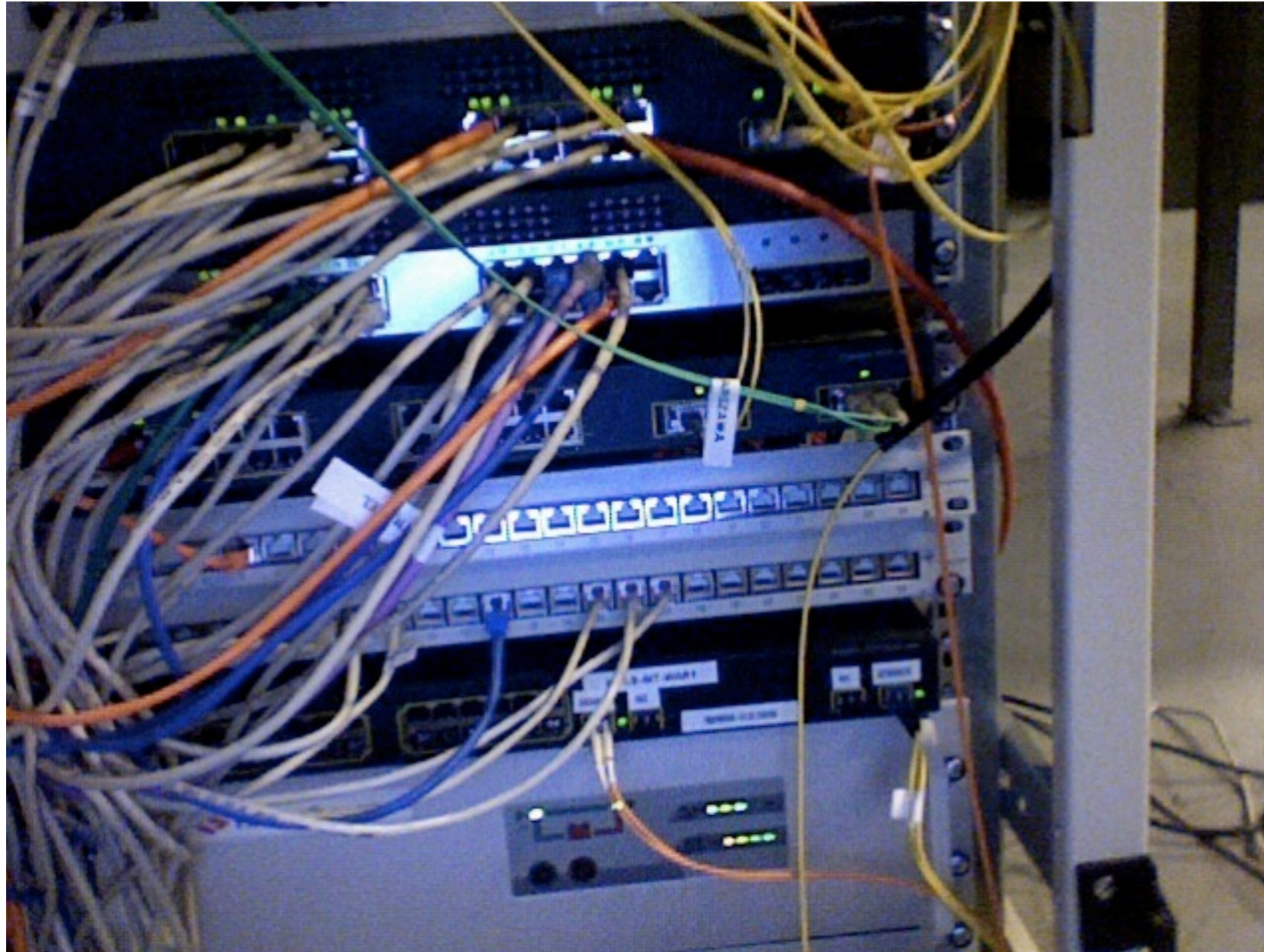
PLIX is 5 years old now (1st of March 2006)

We invite everyone to join us during evening party :)

Some photos from our history



PLIX - beginning of 2007



PLIX DC - at very beginning



There were some funny moments



There were some funny moments



We were growing, 42nd floor in LIM too, so more and more cables were coming to our rack



so we had to organize them from time to time :)



Then we've leased facility on 13th floor in LIM



To have wonderful view on City of Warsaw :)



in the mean time we were making a lot of exercises with our friends from ISP market to have better performance at work



because we are TEAM :)



Then we changed our office to 3rd floor in LIM



And started to clean up cabling in racks on 42nd floor



January 2009 - we've started installation of PLIX DC on 1st floor



It wasn't easy...



It was extremely exhausting work...



But we've done it :)



PLIX
POLISH INTERNET EXCHANGE

CE
CE-Colo

But we've done it :)



So we've started to arrange colo space in safes located in our office (3rd floor)



We had to enlarge doors to room next to safes to get in there with new APC UPSes



We've used 5.000 meters of 185mm² copper power cable which weights 35 tons in total



We've built 300meters of new ducts over the ceiling



We've installed completely new and very thoughtful power system



Everything to secure YOUR racks in PLIX DC



Not enough? We have bigger facility in Pruszków (Neutral Data Center - NDC)



350 square meters available now
(expandable to 700sqm in 3 months)



2MW of power (2x1MW our own trafo stations)
same power scheme as we have in LIM



2x 1,1MW of diesel power generators (CATERPILLAR)



Precision Cooling



PLIX
POLISH INTERNET EXCHANGE

CE
CE-Colo

Neutral Data Center (NDC)

- 1) 350 square meters of space
- 2) 2 independent 15kV lines
- 3) 2 trafo stations 1MW each
- 4) UPSes with battery backup for 20mins
- 5) DC power plant
- 6) diesel power generators
- 7) mobile diesel power generator connection
- 8) raised floor
- 9) precision cooling
- 10) gas fire suppression
- 11) CCTV monitoring



Still not enough?
Take a look here - CE COLO Piaseczno



CE COLO Piaseczno

- 1) 4000 square meters of space with more than 700 sqm immediately available
- 2) 2 independent double 15kV lines
- 3) 8 trafo stations 1MW each
- 4) UPSes with battery backup for 15mins
- 5) DC power plant
- 6) diesel power generators 7x 800kVA
- 7) mobile diesel power generator connection
- 8) raised floor
- 9) precision cooling
- 10) gas fire suppression
- 11) CCTV monitoring





You can securely plan your future with PLIX and CE COLO - we are here to help you.

If you wish to see this on your eyes, just join us at our stand, leave your visit card, and we will organize tours to PLIX DC today, and to PLIX CE COLO site tomorrow.





Thank You

Any questions?

drop a line to:

s.biernacki@plix.pl

jan.daan.luycks@cecolo.com

